

- NOTES:
1. GENERAL MACHINING APPLIED PRACTICES ARE PER 348A9200.
  2. PIPING APPLIED PRACTICES ARE PER 351A3700.
  3. PIPING WELDS ARE PER P8A-AG3, FIGURE PER APPENDIX II, FILLER METAL COLUMN AE-L PER APPENDIX I. ASSEMBLY WELDS ARE DESIGNATED WITH A SYMBOL "X", IF APPLICABLE.
  4. STRUCTURAL WELDS ARE PER P8A-AG1, FIGURE PER APPENDIX III, FILLER METAL COLUMN AB PER APPENDIX II.
  5. CLEAN AND PAINT PER ML ITEM 0108.
  6. TORQUE BOLTS AND STUDS PER 248A4158.
  7. DO NOT CAUSTIC CLEAN FLEXIBLE METAL HOSES.
  8. ENSURE THAT FLEXIBLE METAL HOSES ARE INSTALLED IN A STRAIN FREE CONDITION.

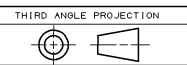
REV 119E1057			
REV	DESCRIPTION	DATE	APPROVED
1	REVISE ON CAD ONLY UG PART: GS7078-0965 ( SPEC: 119E1057 )		

6	BLT & STUD TORQUING	248A4158
5	INSTR, CLN & PNT	ML ITEM 0108
4	WELDING-GENL SPEC	P8A-AG1
3	WLD FAB OF STRB PP	P8A-AG3
2	APLD PRAC, PP	351A3700
1	APLD PRAC, GENL MACH	348A9200
1	NOMENCLATURE	IDENT
LIST OF COMPLEMENTARY DOCUMENTS		

- (G2) UPPER BASE
- (G1) LOWER BASE

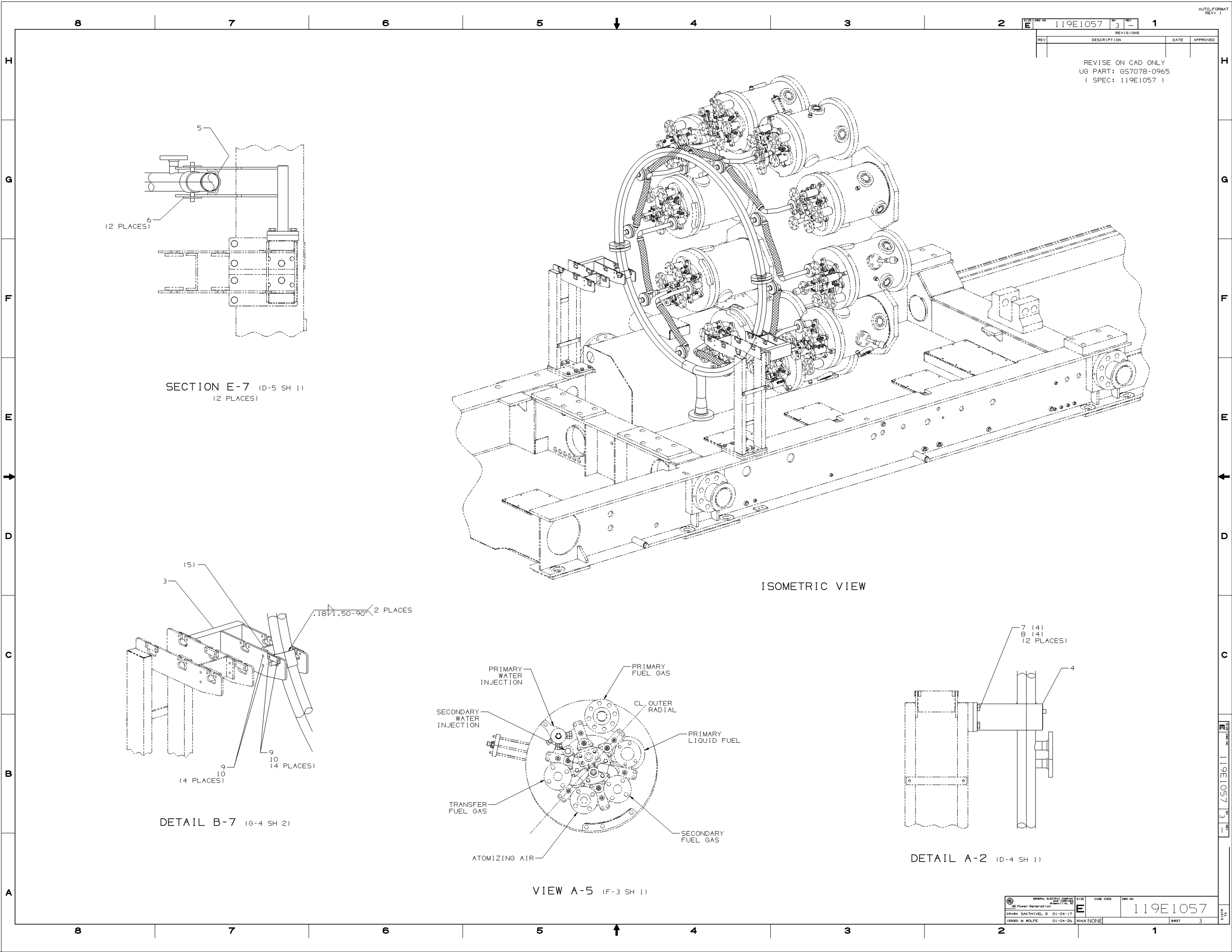
REV	REV STATUS
3	2
1	SH

BOM ISSUED		GE Power Generation	
UNLESS OTHERWISE SPECIFIED	SIGNATURES	DATE	GENERAL ELECTRIC COMPANY
DIMENSIONS ARE IN INCHES	DRAXIN SAKTHIVEL	01-04-17	GE TURBINE
TOLERANCES ON:	GEORGE THIRUMANAM	01-04-18	GE TURBINE
2 PL DECIMALS ±	HERNANDEZ VILAS	01-04-26	GE TURBINE
3 PL DECIMALS ±	HERNANDEZ VILAS	01-04-26	GE TURBINE
ANGLES ±	HERNANDEZ VILAS	01-04-26	GE TURBINE
FRACTIONS ±	HERNANDEZ VILAS	01-04-26	GE TURBINE
APPLIED PRACTICES	QUAL CONT M WOLFE	01-04-26	FIRST MADE FOR: ML-7A1PEA1-16
348A9200	QUAL CONT M WOLFE	01-04-26	0965
SCALE	115E6753	SCALE	119E1057
SCALE	115E6753	SCALE	119E1057



DT-1N





119E1057		3	1
REVISE ON CAD ONLY			
UG PART: GS7078-0965			
( SPEC: 119E1057 )			

119E1057	3	1
119E1057		
119E1057		
119E1057		